

## 60% COURSEWORK

In year 10 you will complete a series of mini projects to teach you a wide range of skills. **3 projects** – presented in your book.

In year 11 you will get the opportunity to develop these in a more creative and advanced way. **1 Project** – presented on sheets.

## 40% EXAM

Exam project title released January 2026, you will have time to prepare and experiment and you will complete a final outcome in 10 hours.



# GCSE Photography

**Book contribution = £4**

**Plastic folder A3 = £3**

**Print and materials  
contribution = £10**

**TOTAL = £17.00**



## A01

**Research** into themes and photographers including analysis of their work.

## A02

**Refinement of your ideas** through **experimenting with skills** that relate to the project theme and your research.

## A03

**Recording of your ideas** through sketches and annotation and the quality of your photography.

## A04

**A Personal response**; how you respond to the project theme in creative ways.

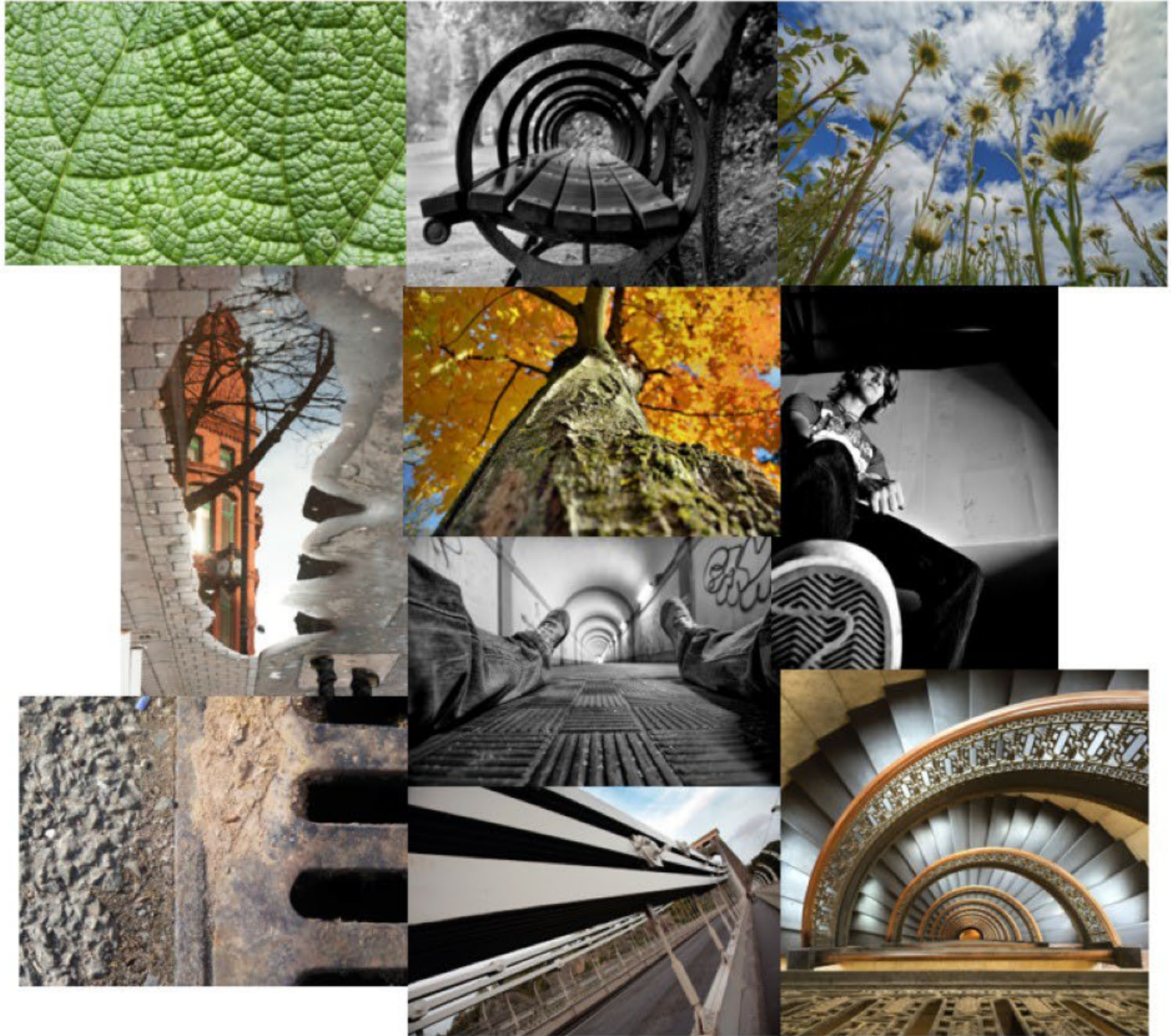


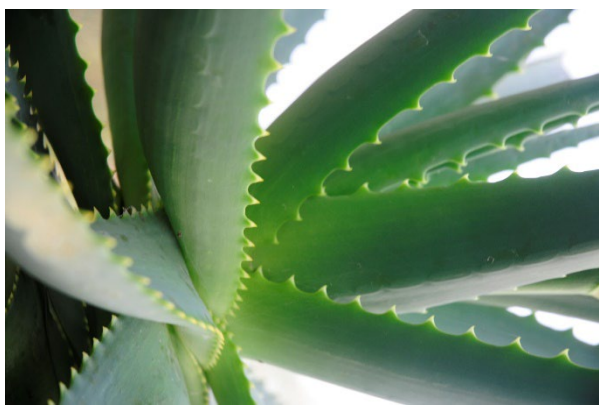
# Shoot 1: Unusual Perspectives

2 School Shoots  
1 Home Shoot

---

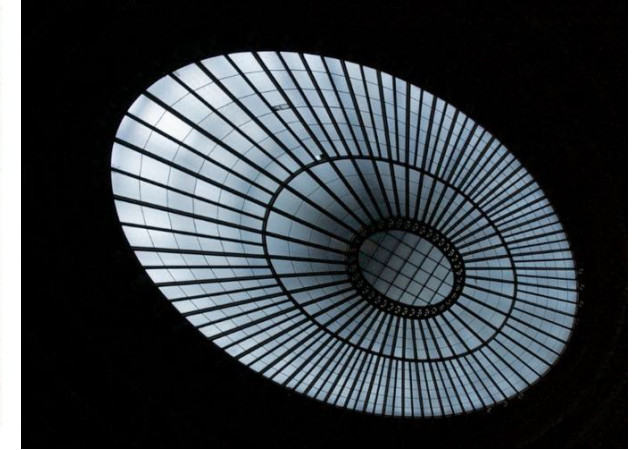
Angles and Viewpoints  
Low Angle  
High Angle  
Close Up  
Wide Angle





# 1: PATTERNS SHOOT

Look for patterns in the shapes of plants, in the overlapping of leaves and in the architecture. Get close, focus accurately check your shots regularly.



## CONTACT SHEET:

Title: **Unusual Perspectives**

Date: **10 / 9 / 18**

Technical information:

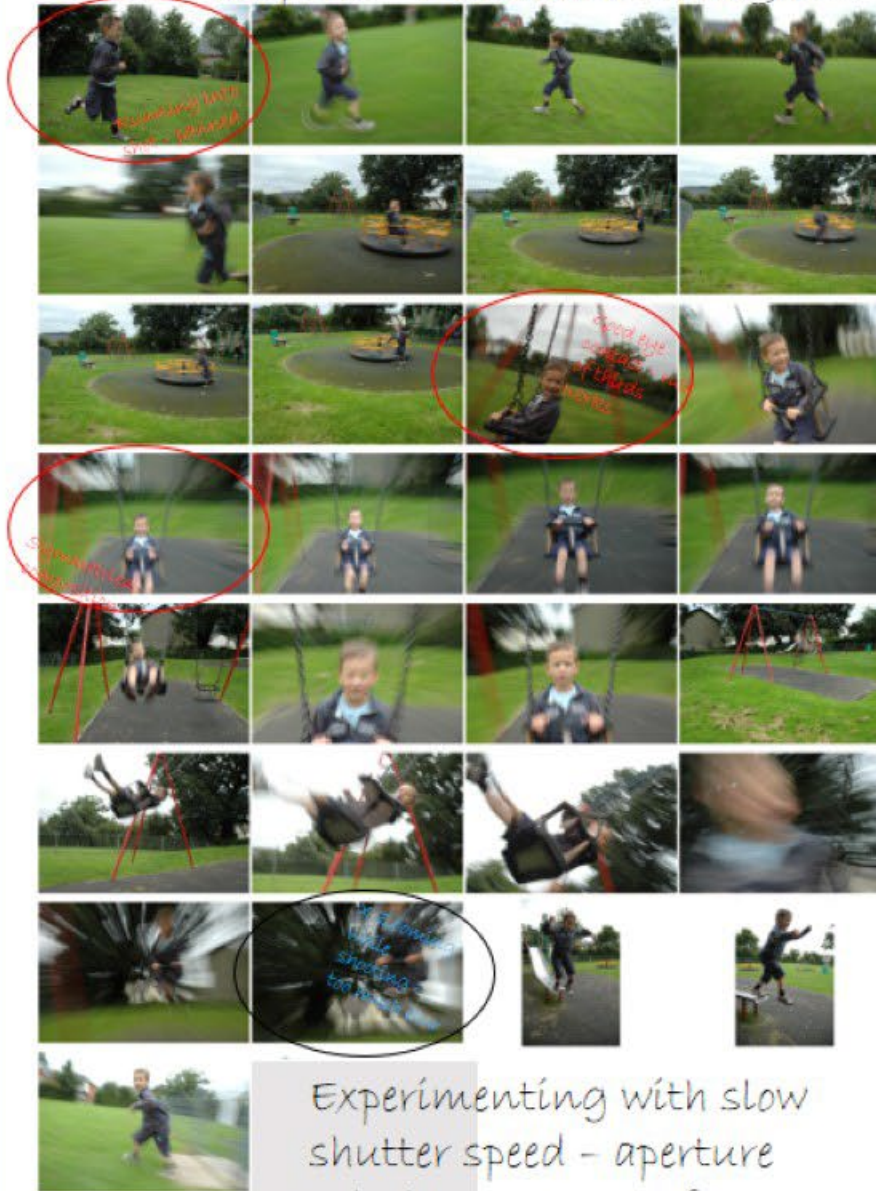
**Auto Mode / Manual Focus**

Highlight at least 3 positives

**VIEWPOINT / FOCUS / HIGH ANGLE  
/ LOW ANGLE / CLOSE UP**

Highlight one critical  
comment

Ben at the park - Movement Shoot 9/13



Notes  
about  
this shot



Notes  
about  
this shot



Notes  
about  
this shot

Experimenting with slow  
shutter speed - aperture  
priority - manual focus

# GCSE Photography



## Compact camera:

- Small / Light
- Fits in pocket
- Can be good quality
- More automatic features
- Less or no Manual Settings
- A bit limited when trying to do more creative things
- Sometimes has zoom.
- Quality varies greatly with price.



## Bridge Camera:

- Looks like a DSLR – smaller / lighter
- Good quality zoom / wide function
- Fixed lens
- Auto and some manual functions.
- Best ones have most of the manual features of DSLR
- Quality varies greatly with price.



## DSLR:

- Professional level camera
- Interchangeable lenses
- Zoom, telephoto and wide-angle
- Full manual setting and various auto modes too
- The best quality image sensor



## Phone:

- Fits in pocket
- Automatic setting
- Touch screen gives some manual control too.
- Very limited zoom
- Best have great creative settings (pamorama / burst / colour manipulation etc)



Find Microsoft 365 apps

- Microsoft 365
- Outlook
- OneDrive
- Word
- Excel
- PowerPoint
- OneNote
- SharePoint
- Teams
- Sway
- Forms
- Calendar
- More apps

- Document
- Workbook
- Presentation
- Survey
- Create more



For you

- Folder
- Files upload
- Folder upload
- Word document
- Excel workbook
- PowerPoint presentation
- OneNote notebook
- Forms for Excel
- Visio drawing
- Link

SC

HT

A

1

GCSE PHOTO INTRO SLIDE  
My Files

INTERVIEW GCSE\_Photography\_Castle\_School

15°C



**What Makes a Great Photo?**

In this photo I notice that the spoons are bent into swimming shapes, as if suggestive of sperm swimming toward an egg. This type of photography is called "concept" because it is about communicating an idea or meaning visually

The image is shot from a low angle to emphasise the height of the man on the skateboard. The photographer will have crouched low and pre-focussed to frame the shot. I love the sense of movement and danger.

The bird is walking along the pavement and beyond it we can see the feet and legs of pedestrians. This picture creates humour from an everyday occurrence; the photographer has crouched down at ground level and is creating a candid shot. The red feet of the bird is the only colour and creates a focal-point

**What Makes a Great Photo?**

The shot reminds me of

Shooting in monochrome gives the shot a sinister mood

The picture makes us think about what busy lives people have today

2 homework pages, 1 classwork page

**Subject** – what can I see?

**Genre** – what type of photography is this?

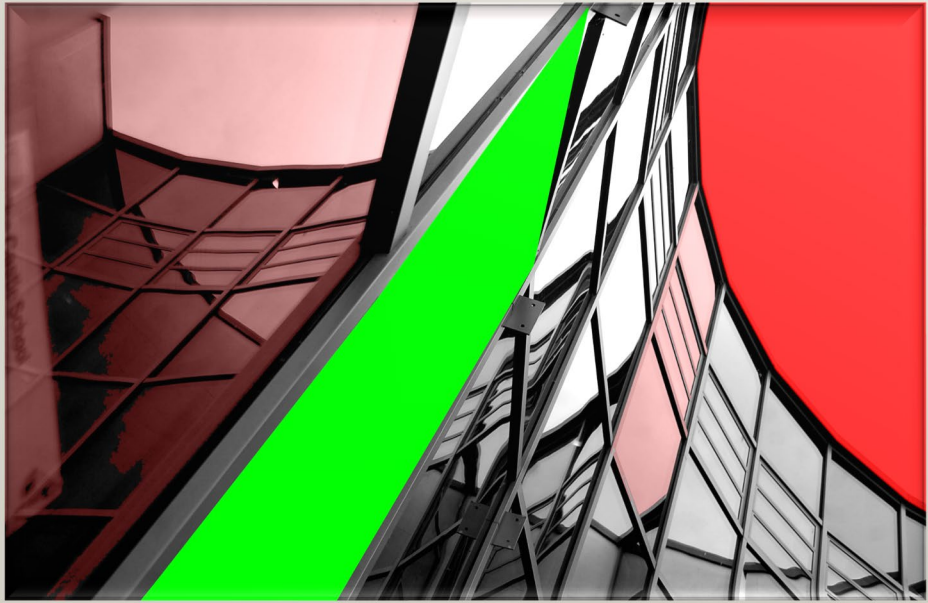
**Composition** – how has the photographer arranged the subject within the picture frame?

**Technical** – use your knowledge of photography to explain how they did it?

**Ideas** – what is it about? What's the purpose of the photo? What are we meant to think?



She is a young woman, with short or swept back hair. Her make-up and the studio location suggest a fashion shoot; she is pictured looking directly into the camera with a confident almost challenging stare. The significant element in this photo is the shocking sheet of coloured water or ink that seems to have been thrown from the left side of the shot and is almost engulfing the model; it makes her calm expression even more unexpected. She is modelling calm in a sea of chaos and colour.



On this page I am exploring an idea inspired by Rodchenko's Graphic Art. I wanted to combine his simple graphic colours and patterns with his distinctive Photographic style so I have....





### EDEN PROJECT

**VISIT** Start with patterns, look for patterns in the shapes of plants, in the overlapping of leaves and in the architecture. Get close, focus accurately check your shots regularly.



**Selective focus** is a really good way to isolate your subject from its background—get in close and experiment with different angles, even though your background is out of focus it is still important to make sure that there is nothing distracting there... You want the viewer to focus their attention on just the part of the image that you are interested in showing them.



Eden is great for the **Juxtaposition of natural and man made**; use this in your photography. You might be able to see both natural and man made in one shot, or you might look for shots that connect, where for example a natural shape is repeated in the architecture



**Joiners** are a great way to be a little more experimental at the Eden Project. By taking shots from a single viewpoint that can be pieced together to make one single larger image you can get more in; stand back and create a panorama, or a 360 degree image. Consider also following paths or stems, lines of planting or tree trunks. Feel free to include people in your joiners too to show the interaction of people with their location.



For this shoot I took my model to a beautiful setting in a park. This is so I could get a colourful and vibrant background to make my model the focal point. I got my model to pose in unusual positions so I could capture her in unique angles. For example, in one photo I communicated with my model how I wanted her to pose and asked her to point her leg out. I then took a 0.5 photo from a low angle pointing upwards her leg to extend the length and also of her foot in comparison to her body. This created a very unusual perspective as her foot was much larger than everything around her. In another image, I got her to jump in the air above the camera so I could capture not only her but her surroundings, this creating a wide view point. I used a range of low and high angles to have a mixture of shots from multiple perspectives. I really enjoyed this homework as I tried new skills I hadn't used before. However it was a challenge as I had to explore multiple different angles and perspectives to get the best shot.



## PORTRAITS HOME SHOOT



← TRIP

↑  
INDEPENDENT